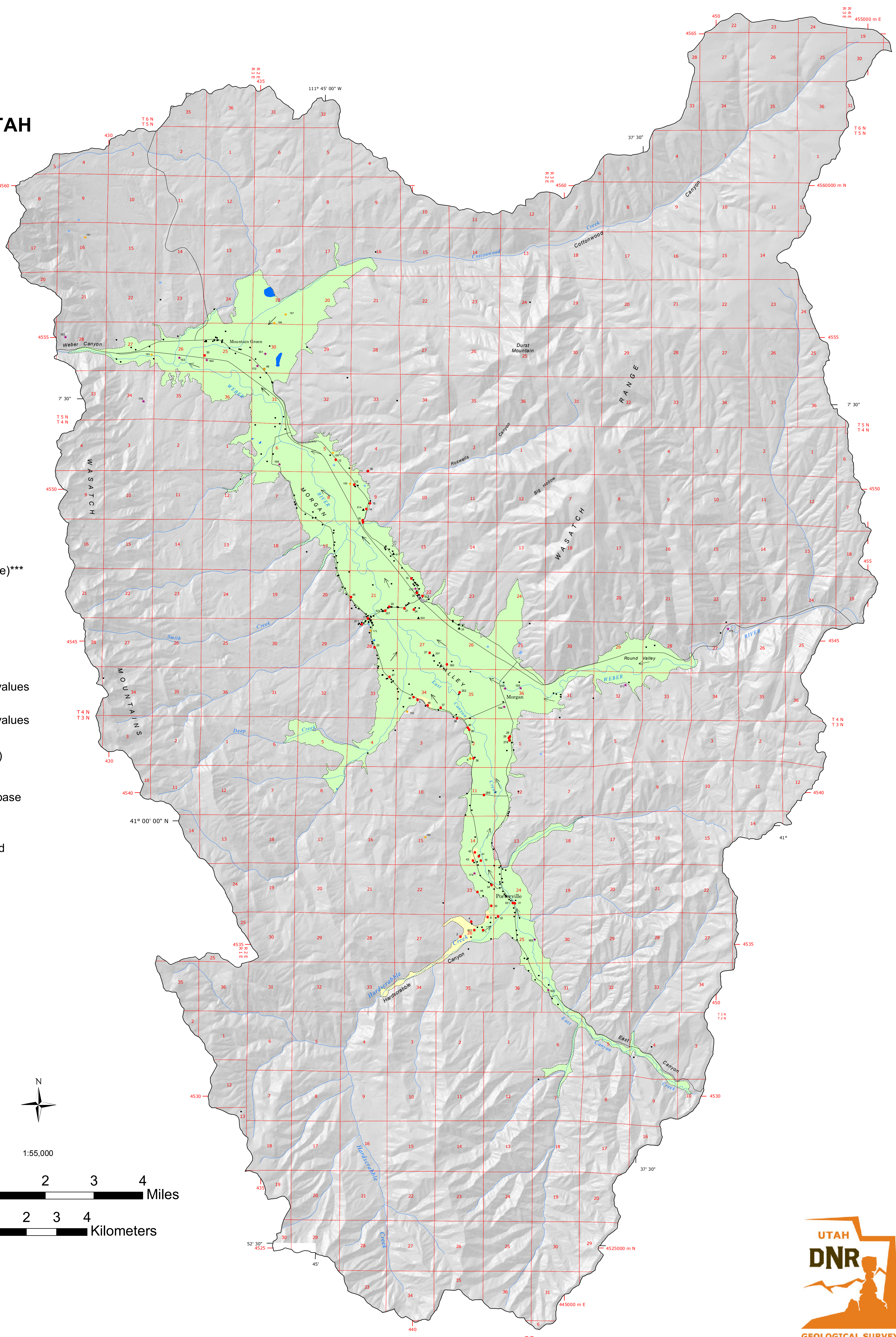


# GROUND-WATER QUALITY CLASSIFICATION MAP FOR THE VALLEY-FILL AQUIFER MORGAN VALLEY, MORGAN COUNTY, UTAH

By Janae Wallace, Mike Lowe, and Neil Burk

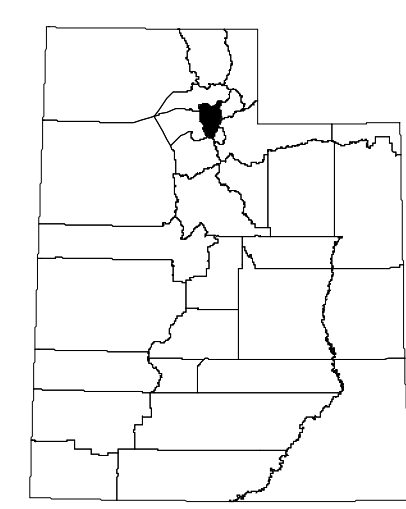
Digital Compilation by Justin Johnson, Matt Butler and Scott Horn



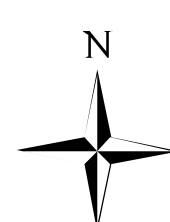
## Explanation

### Ground-Water Quality Classification

- Class IA, Pristine Water Quality (TDS\*: 0-500 mg/L)
- Class II, Drinking Water Quality (>500 to <3000 mg/L)
- Perfected water wells\*\*
- Public-supply well or spring (sampled for TDS\* and nitrate)\*\*\*
- Public-supply well (sampled for nitrate)\*\*\*
- Public-supply well (not sampled)
- Ground-water well (sampled for TDS\* and nitrate)\*\*\*\*
- Ground-water well (sampled for nitrate and having TDS values derived from specific conductance calculations)\*\*\*\*\*
- Ground-water well (sampled for nitrate and having TDS values derived from specific conductance calculations)\*\*\*\*\*
- Number corresponds to Site-ID number (see appendix A)
- \* Total dissolved solids
- \*\* All wells are listed in Utah Division of Water Rights' database
- \*\*\* Sampled by the Utah Division of Drinking Water
- \*\*\*\* Sampled by the Utah Geological Survey
- \*\*\*\*\* Sampled by the Utah Department of Agriculture and Food
- ↑ Ground-water flow direction (from Gates, and others, 1969)
- Ground-water quality class boundary
- Municipal boundary
- Road
- Water course
- Valley-fill deposits boundary
- Study-area boundary
- Water body
- Bedrock (not analyzed)



UTAH



1:55,000

